

Aristotle University of Thessaloniki
School of Agriculture
Laboratory of Applied Soil Science
Laboratory of remote sensing and GIS



PRESERVATION AND IMPROVEMENT OF THE WATER ENVIRONMENT WITHIN THE WFD DIRECTIVE 2000/60 and STAKEHOLDERS ENGAGEMENT

Zalidis George, Professor



**PROTECTION OF RIVERS FROM POLLUTION
CAUSED BY INDUSTRIAL ACCIDENTS**



RIVER SHIELD
INTERREG III B CADSES
NEIGHBOURHOOD PROGRAMME 2000-2006



Route map

- Introduction to the Directive
- Protection of Water Bodies
- Impact and pressure analysis
- Public participation
- Stakeholders engagement
- Public participation in decision making
- What have we learned?

River Basin Planning

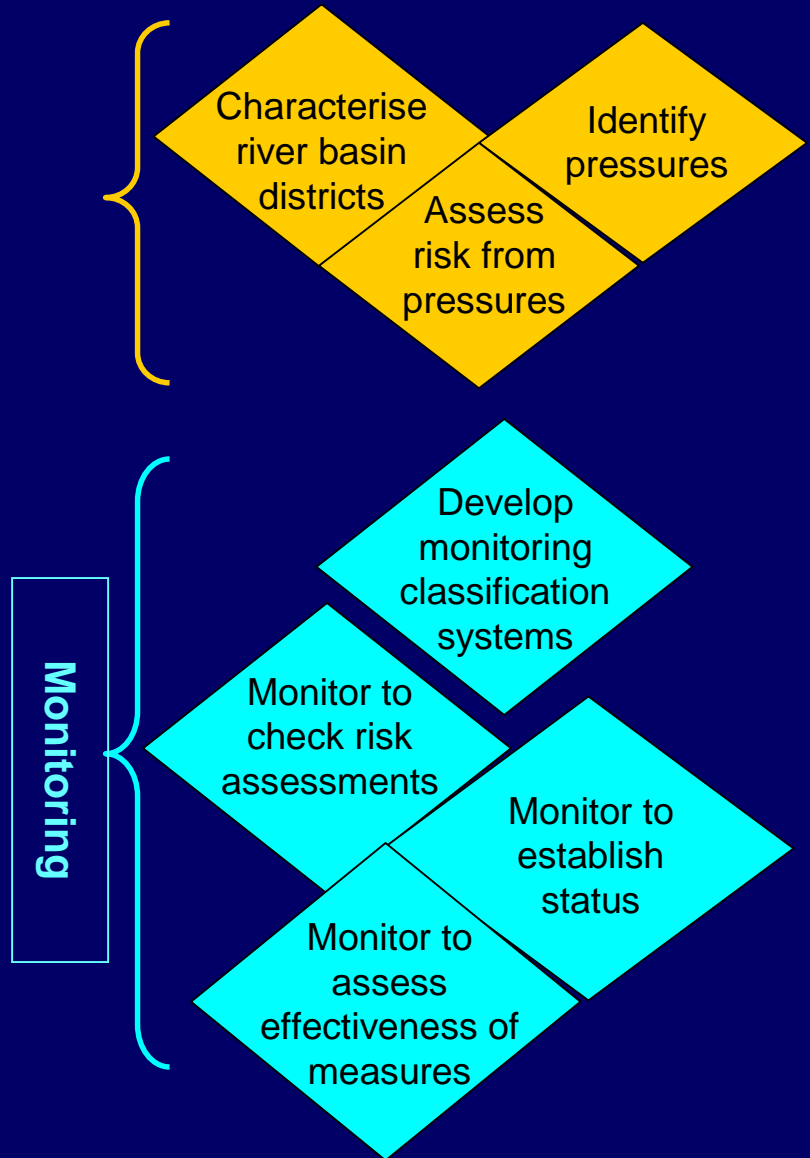
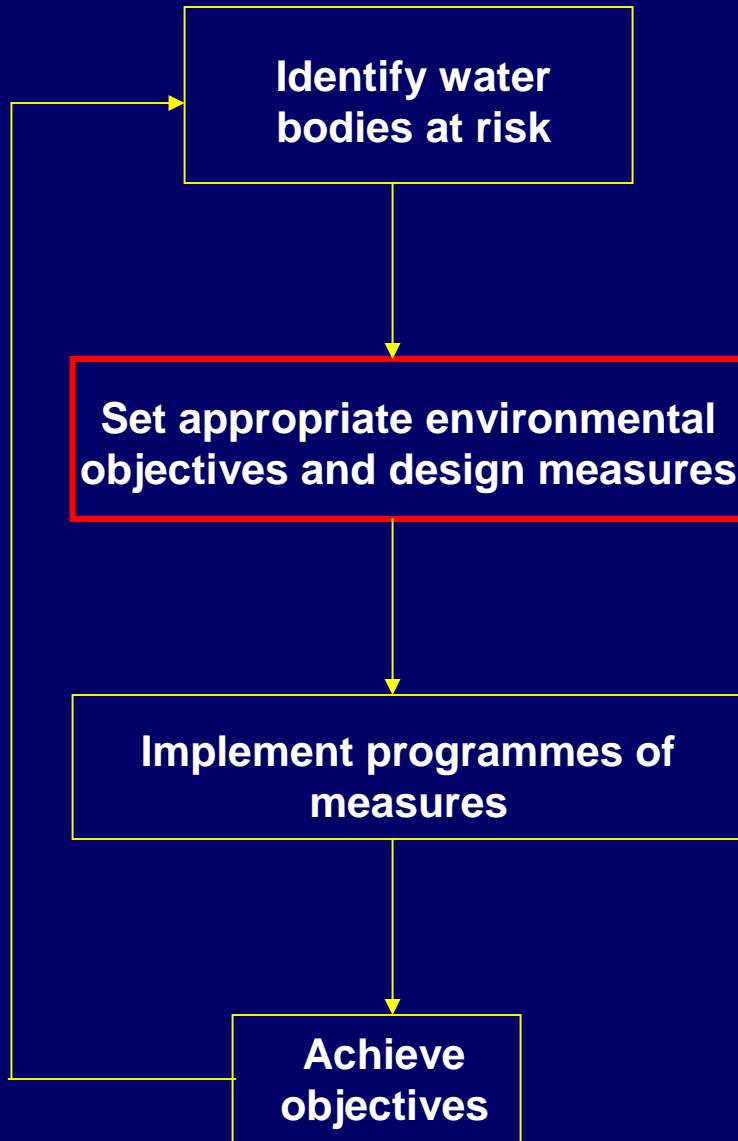
**Protect and enhance the status of
the water environment**

Integration of surface
waters & groundwater

Ecological objectives

**Promote sustainable water
use**

River Basin Planning Cycle



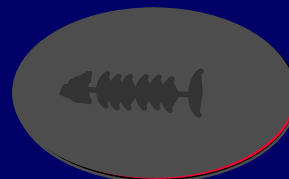
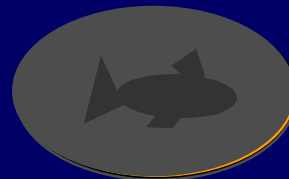
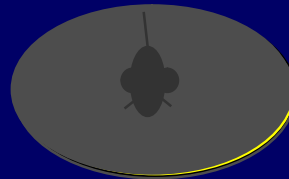
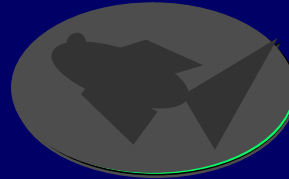
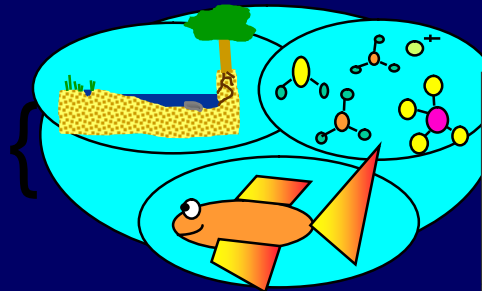
KEY	
	Principal Annex II tasks
	Principal Annex V tasks

Status and Objectives

- **Chemical elements**
 - specific pollutants (priority substances & other substances discharged in significant quantity)
- **Biological elements**
 - fish, invertebrates, algae, macrophytes
- **Physico-chemical elements**
 - e.g. thermal conditions, oxygenation, nutrients, acidification
- **Supporting hydromorphological elements**
 - e.g. hydrological regime, river continuity and morphology

Ecological Objectives

*No or
minimal*



**ECOLOGICAL
STATUS**

HIGH

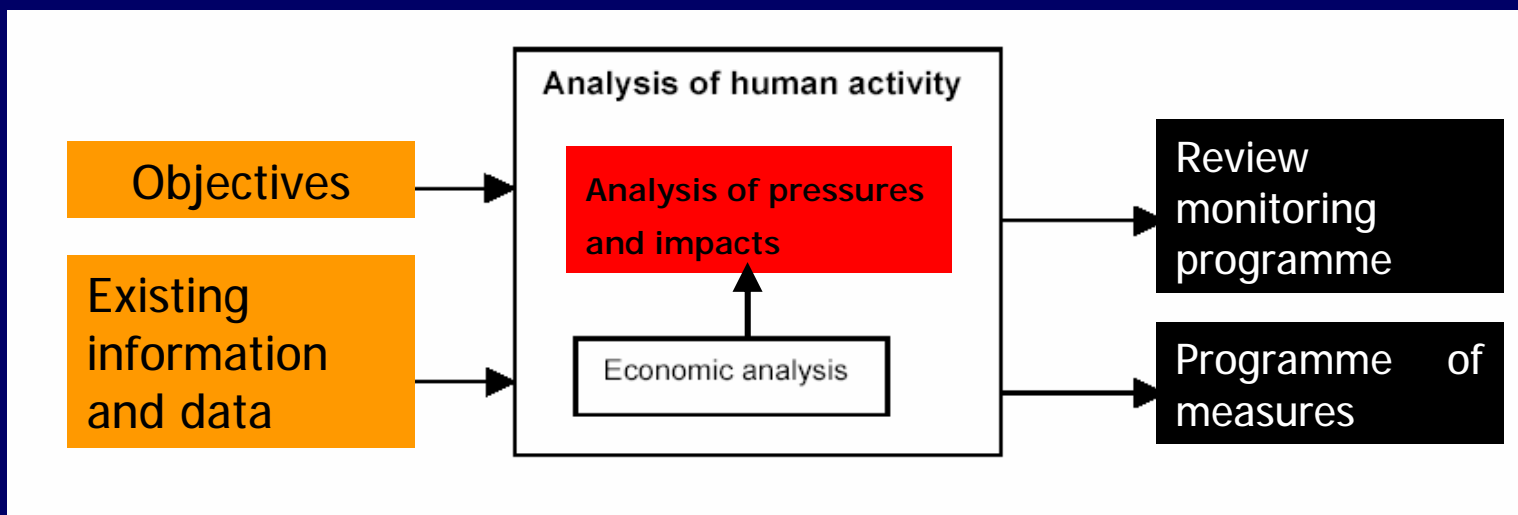
GOOD

MODERATE

POOR

BAD

The review of pressures and impacts is only one element of the planning process, with other **elements feeding** into the review, or dependent on its outcome



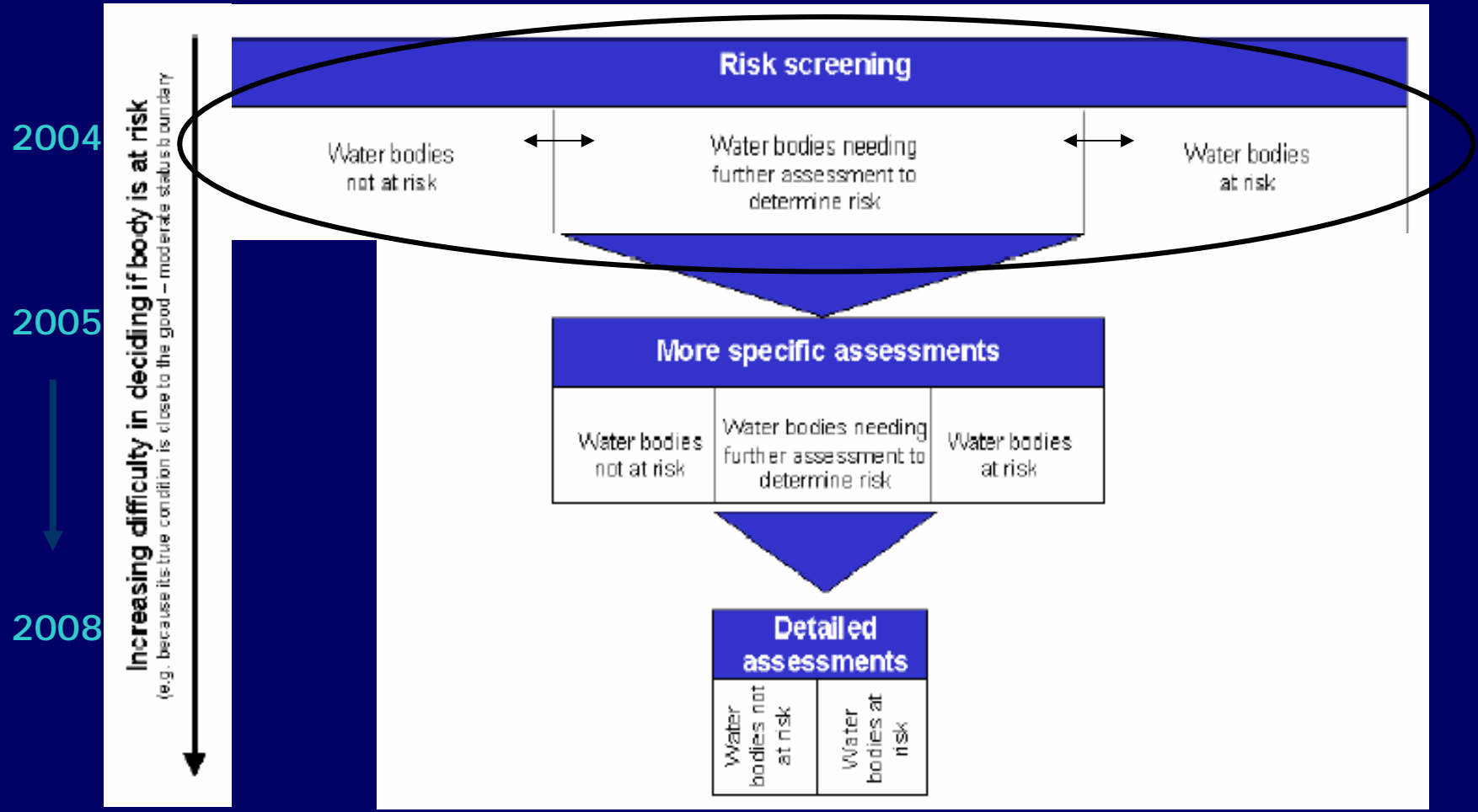
REPORTING

Article 15 specifies the reporting requirements of the review undertaken under Article 5. Member states are required to provide summary reports of the reviews within three months of their completion (i.e. **by March 2005** at the latest for the first review). Subsequently, reporting on these reviews will be contained in the RBMPs, which must be published first in 2009, and thereafter every six years (2015, 2021...).

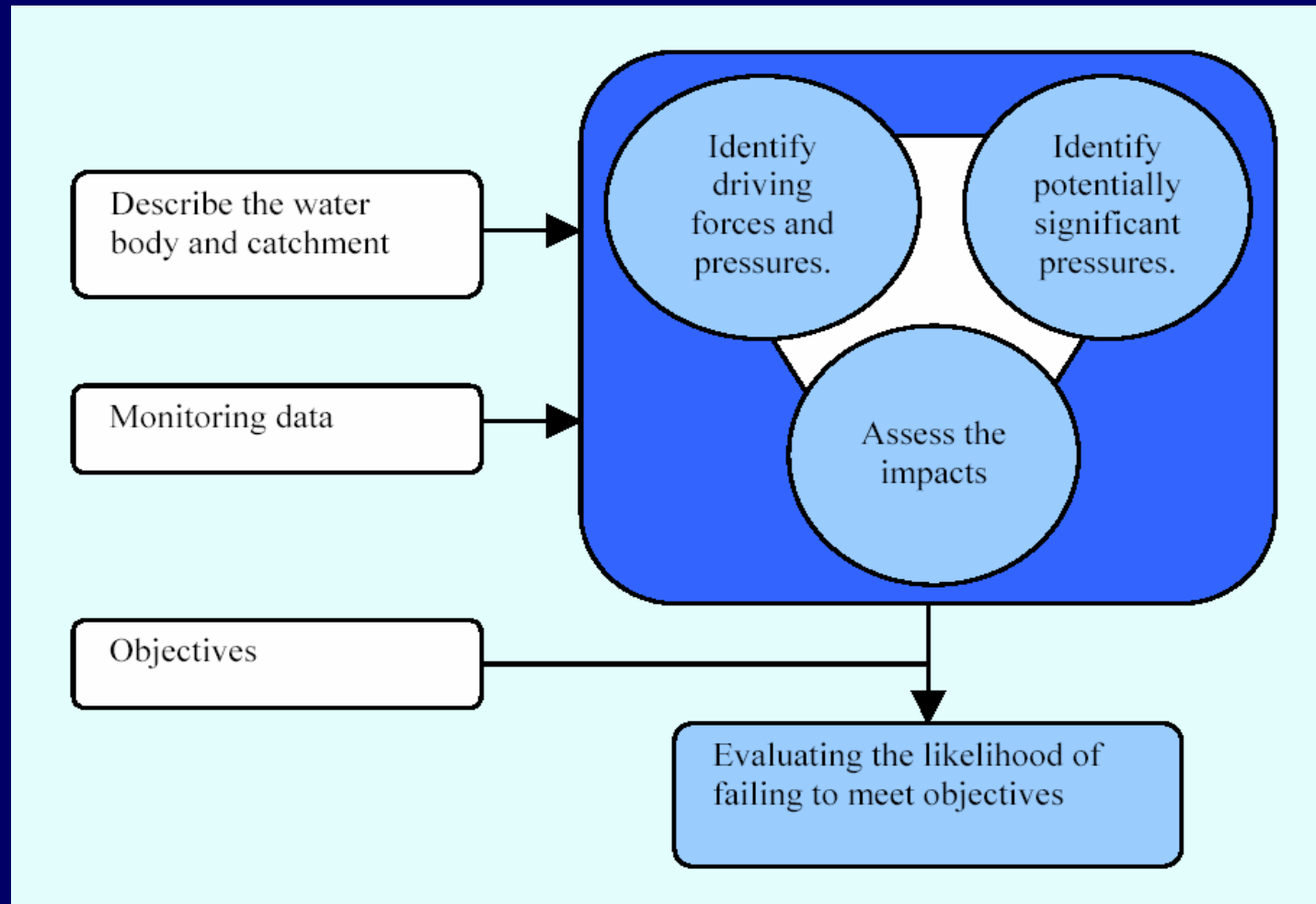
Therefore, from 2009 a schedule with a six-year cycle shall be established, with the review of pressures and impacts occurring two years prior to the publishing of the RBMP.

The review of the pressures and impacts is required in the design of **monitoring programmes** which must be operational by 2006 (Article 8), and also to help develop **programmes of measures** which must be established by 2009, and made operational

The pressures and impacts analyses should be focused in such a way that the effort involved in assessing whether any body, or group of bodies, is at risk of failing to achieve its environmental objectives is proportionate to the difficulties involved in making that judgement.



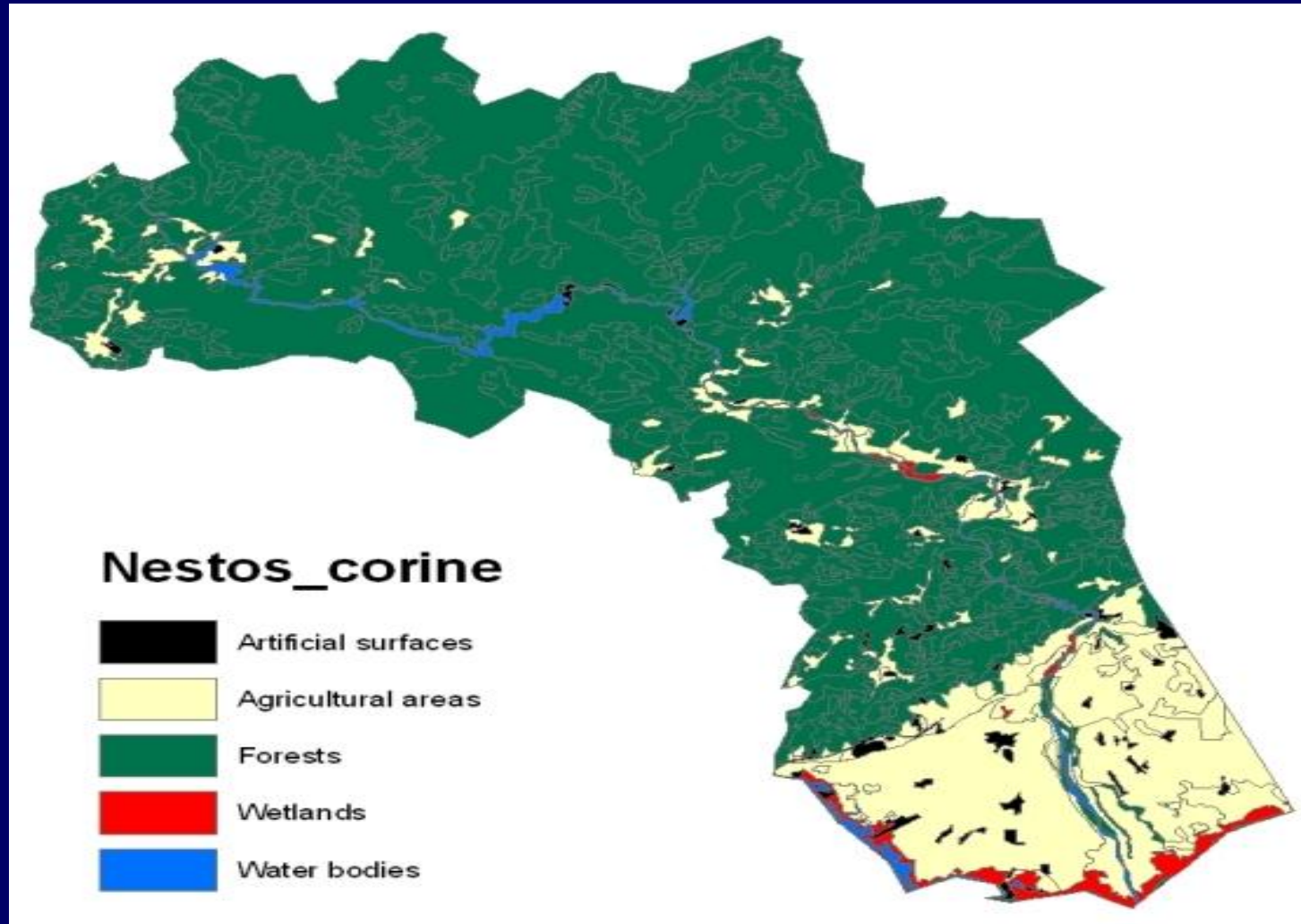
PRESSURE & IMPACT ASSESSMENT METHODOLOGY



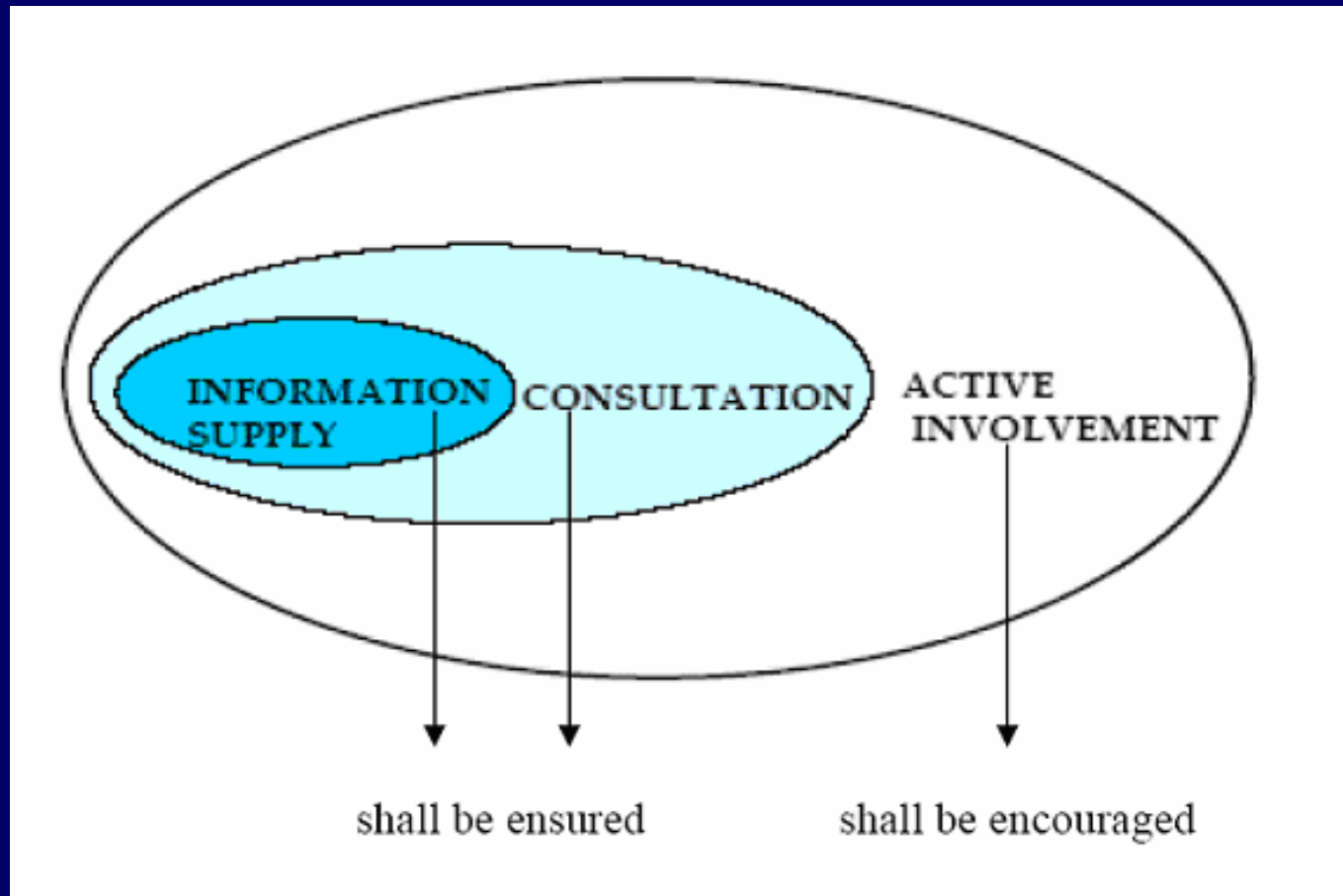
METHODOLOGY

1. Selection of pollutants
2. Numerical values (good / moderate)
3. Identification of DF and pressures
4. Identification of significant pressures and impact analysis
5. Evaluation of likelihood to failing objective

Land use/cover and stakeholders



Public participation levels (Article 14 of WFD)



Participation

people are beneficiaries of development and are involved in:

- initiating
- preparing
- implementing
- sustaining

projects

Social Preparation for Decision making

- Reducing social conflict and resource impacts;
- Creating positive change in values and behaviour towards the environment;
- Gaining support for co-management;
- Increasing knowledge and skills of stakeholders;
- Fostering participation in the river basin management;
- Enabling community members to assert their rights to use and manage its resources.

Difficulties in stakeholders participation

- Lack of resources to facilitate participation
- Low motivation to participate (no immediate benefits perceived by potential stake-holders). Lack of capacity to effectively participate (capacity of the stakeholders themselves)
- Too much bureaucracy by government agencies frustrates stakeholders
- Limited empowerment from higher levels (top down approaches)

Stakeholders engagement in Mesta/Nestos river basin management: the challenges ahead

- Enhancement of social communication
- Promotion of Environmental education
- Capacity development
- Establishment of facilitation mechanisms

Facilitating and supporting initiatives

- The **GWP-Med** may act as a platform in the area bringing together competent organisations and stakeholders related to water management and use issues.
- The **Balkan Environment Center**, as a cross-border cooperational initiative for the sustainable management of environment in Balkans, may develop and implement activities for the scientific support of stakeholders, the transfer of know-how and the implementation of training and educational activities related to the river basin management.

The establishment of facilitating mechanisms aims to:

- Provide the necessary infrastructural support for the establishment and operational facilitation of stakeholders forum.
- Create Networking mechanisms (e.g. helpdesk, regular meetings, newsletters)
- Facilitate access to sources of finance
- Information management and Information flow (e.g. establishment and updating of online database)
- Organization of participatory events
- Design and implement formal, informal and non-formal educational programs that involve a wide range of stakeholders
- Exchange of know how

Public participation in decision making through a bottom-up approach:

Potential benefits

- Increased public awareness of environmental issues
- Effective use of knowledge, experience and initiatives of the different stakeholders and thus improvement of river basin management.
- Public acceptance, commitment and support with regard to decision making processes
- More transparent and more creative decision making
- Social learning and experience resulting in constructive dialogue
- Widely accepted long-term solutions for river basin planning
- Avoidance/ reduction of conflicts resulting in fewer management problems and cost-savings

What have we learned?

- Implementation of WFD in each first steps
- Going from top-down to bottom-up approach
- Availability of information
- The Athemountas experience

